



Cache
County
1857

Cache County Development Services

The Trails Cache

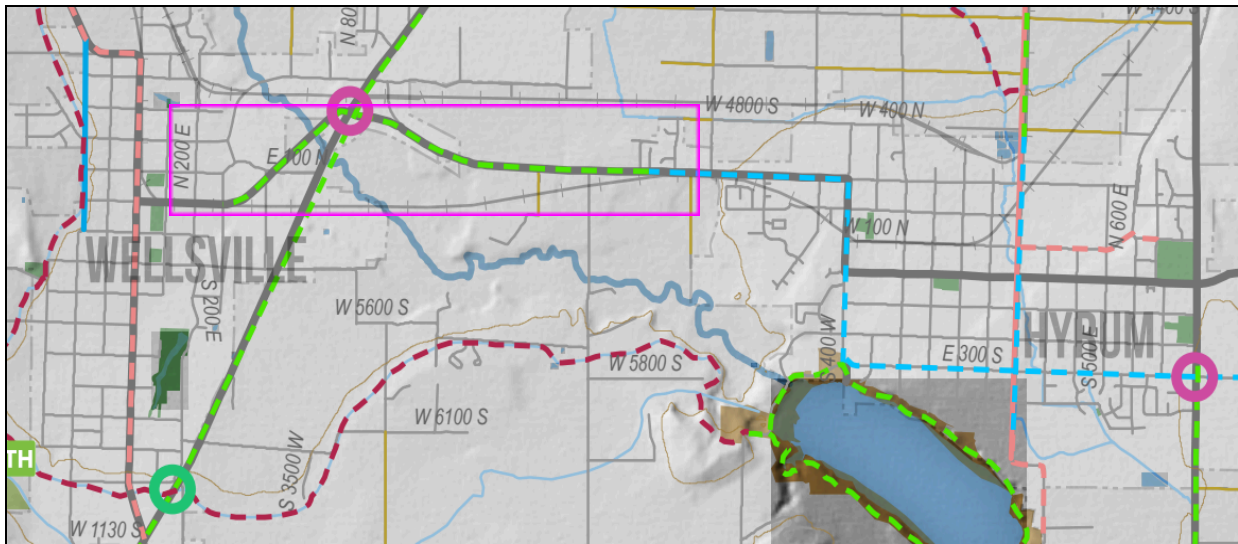
12/2/2025

HWY 101 TRAIL FEASIBILITY STUDY

REQUEST FOR PROPOSAL

Project Introduction:

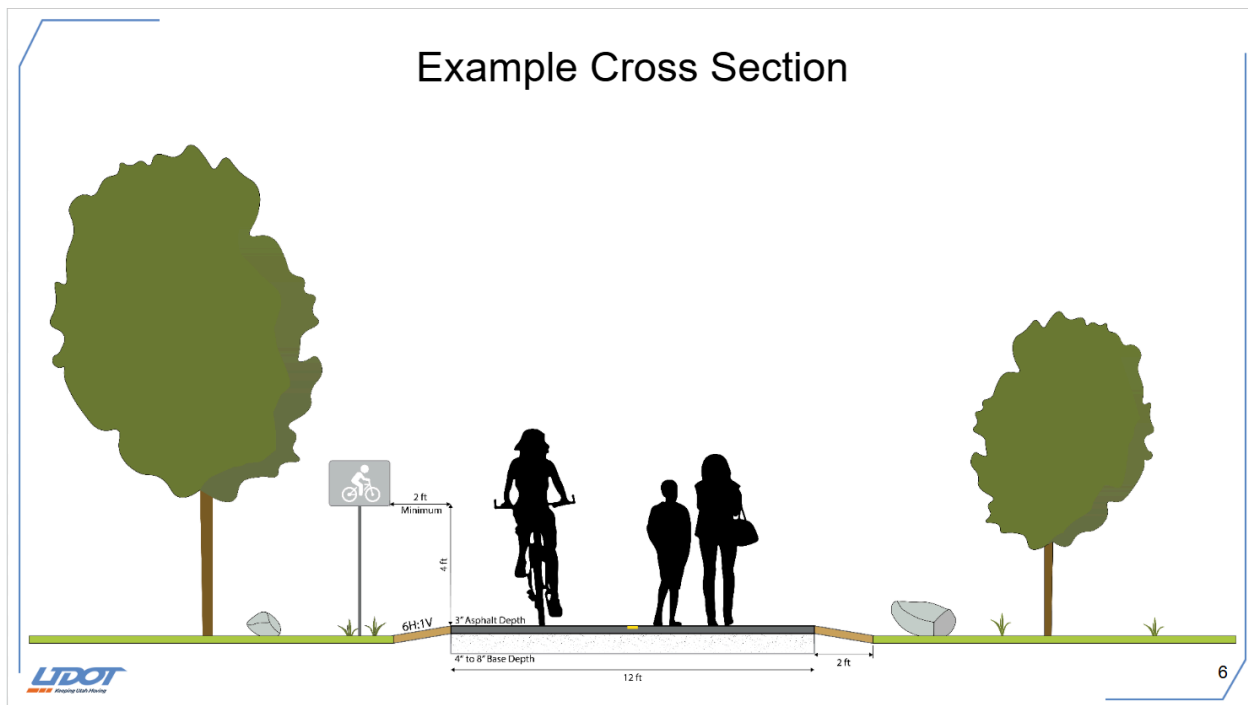
Cache County, in collaboration with the cities of Hyrum and Wellsville, is working towards adding 1.8 miles of shared-use path between Hyrum and Wellsville City centers, connecting the ends of their sidewalk networks. These communities share a ready and natural connection that is essential for a robust trail network. This trail has also been included in the Utah Trail Network. The next step in this project is completing a feasibility study that will consider land features, development proposals, and landowner concerns. Our study will identify a workable alignment connecting the existing sidewalk systems of both cities. These public destinations are approximately 1.8 miles apart and are largely within UDOT right of way.



MAP OF PROPOSED TRAIL ALIGNMENT, HIGHLIGHTED BY PURPLE BOX, BETWEEN HYRUM AND WELLSVILLE CITY CENTERS (FINAL ALIGNMENT MAY DIFFER)

Another important aspect of this study will be working with private landowners and UDOT to secure easements that are mutually beneficial. Preferred alignments have been identified by the County, each of the cities, and UTN. This study will further explore constraints to identify constructable alignment(s). Cache County hereby solicits qualified firms to submit a brief statement of qualifications, study scope of work, and fee proposal for a feasibility study of this potential trail.

The envisioned project anticipates a 12-foot-wide paved trail, to be consistent with the UTN designation requirements (<https://utahtrailnetwork.udot.utah.gov/current-program>). The proposed route should seamlessly tie into the existing sidewalk networks. The trail will follow Hwy 101 and be within UDOT's ROW wherever possible. Design should also follow ADA standards and UTN trail design practices wherever possible. Alternative alignments should be explored if certain land features along the ideal alignment prohibit the implementation of these standards and best practices.



EXAMPLE: CROSS SECTION FROM [UTN QUICK REFERENCE DESIGN GUIDE](#)

Requested Scope of Work Objectives:

Cache County welcomes proposals with a scope of work that includes the following objectives. Key inquiries to be addressed in this conceptual-level design feasibility study encompass topographical considerations pertaining to the trail's alignment along Hwy 101 and near canals. The study will also investigate potential access challenges posed by pinch points and waterways. Conceptual design solutions for scenarios involving highway crossings will be explored. Lastly, the study will culminate in a comprehensive assessment of the anticipated total project cost. All interested parties shall submit a PDF that outlines how the following objectives will be accomplished. Submissions are not to exceed 12 pages, excluding employee resumes.

The scope of work shall include the following but may be expanded at the County's discretion, based on recommendations of the selected consultant:

1. Constructability

The study's primary objective is to establish a feasible alignment for a 12-foot wide, paved trail and concept-level design that can realistically be constructed. This scope of work will not include detailed design or engineering.

2. Connectivity

The study shall focus on generating a sidewalk-end-to-sidewalk-end trail alignment and concept level design within the study area between Wellsville and Hyrum. Ensuring seamless connectivity is necessary, so some portions of the corridor may require one or more alternative alignments where anticipated challenges exist. The selected consultant will work with the partner cities, UTN, and Trails Cache to identify challenges and where these alternative alignments will be needed. The preferred alignment should be kept within UDOT ROW wherever possible. In the case that the preferred alignment extends beyond the available UDOT ROW, consultant will identify the parcels involved and make initial contact with landowners to gauge interest in the project. Additionally, the study will provide viable solutions to address identified barriers such as highway crossings, navigating pinch points along the roadway, and potential environmental needs and conflicts.

3. Design Standards

The study will propose a trail that aligns with UDOT and UTN design standards and best practices, accounting for various trail typologies, including road-adjacent designs. This study shall identify areas where these standards might not be suitable, taking into consideration contextual factors, projected usage, safety requirements, cost estimates, and funding considerations.

4. Cost Estimates

The study will provide a realistic assessment of the required investment for construction. This cost estimation will consider the entire project life cycle, including design, engineering, construction, and ongoing maintenance of the trail. Cost estimates should anticipate a 12-foot wide paved trail. Cost estimates should also consider potential barriers such as road and water crossings that may require additional amenities to ensure a safe crossing.

5. Coordination

The project team will plan for four coordination meetings with the County's trails team at the following project checkpoints: project kickoff, post-site analysis, 90%

study completion, and study completion. All entities will be invited to these touchpoint meetings. Effective communication and collaboration are essential elements of this task.

6. Budget

The county currently has a budget for this project that is not to exceed \$40,000. When submitting the scope of work and fee proposal, please break down the services that can be provided within the \$40,000 limit and explain the additional costs, if any, that would be required to meet all the requests above. Please include an estimate for variable aspects of the project, such as the number of landowner discussions or the number of trail barrier solutions, that can be included within the budget.

7. Timeframe

Each proposal shall provide a timeline for completion of key project benchmarks and outline each major task. This shall include key meetings with county staff and partner communities, reaching out to property owners, preliminary alignment presentation, presentation of draft study, and additional benchmarks as proposed to accomplish the scope of this project.

This project is funded by the RAPZ tax and the funding will need to be spent by July 1, 2026. Based on this timeline, the final deliverable of feasible alignments, cost estimates, and landowner participation will be needed by June 2026, preferably earlier.

Deliverables:

Cache County will expect the following deliverables at the completion of the study.

- Report including preferred alignment, needed alternative alignments, a high level environmental review, and specific trail design standards to be followed
- Map(s) of feasible alignments
- Summary of the project and meetings with the county, cities, and landowners
- Project cost estimate that demonstrates the differences in cost for each alternative alignment
- Collection of original signed MOUs and pdf versions, with Landowners participating in the project, as available
- Collection of original signed easement agreements and pdf versions, as available

- Collection of documents referenced or developed as a part of the study, both as hard copies for our files and a pdf to share with partners (e.g., survey maps, trail design standards, etc.)

Consultant Selection Process:

Please submit a PDF project scope and fee proposal to landis.wenger@cachecounty.gov by no later than 5 PM on January 2, 2025. Proposals received after the deadline will not be accepted. Any questions must be received by 5:00 PM on Friday, December 12th.

Selection of the consulting firm will be made by a review committee appointed by Cache County composed of planning staff and partner organization representatives. Shortlisted firms may be invited to participate in interviews or presentations as part of the evaluation process. The final selection will be based on the overall quality of the proposal, team experience and qualifications, and best represented value for the County and partner cities. Cache County may utilize a scoring system based on these three selection criteria to assist the selection process. These scores will not be the sole deciding factor in firm selection.

- Quality of Proposal – Demonstrate an understanding of project goals and issues to be addressed. Demonstrate familiarity and a coordination strategy for working closely with Cache County, the partner cities, and the landowners throughout the corridor.
- Team Experience and Qualifications – Provide information, resumes, and/or bios that reflect a depth of team leadership, management, and technical qualifications. Provide up to five (5) relevant and recent project examples. Include experience working with private landowners on similar projects.
- Project Approach and Cost Value – Demonstrate the ability to complete the scope of work within or under the proposed budget and timeline. Identify how the project scope of work will be addressed, how challenges will be resolved, and how your approach will encourage new ideas that improve the end project.

Cache County reserves the right to reject any or all proposals received, to negotiate modifications to proposals, and to waive minor informalities or irregularities in the

proposals received. Possible reasons for rejection include but are not limited to failure to address the scope, lack of qualifications, incompatible schedules, etc. This RFP does not commit Cache County to award a contract or to pay any costs incurred in the preparation of a proposal.

Thank you for your time,

Landis Wenger
Regional Trails & Active Transportation Coordinator

landis.wenger@cachecounty.gov

(435) 755-1646

12/02/2025